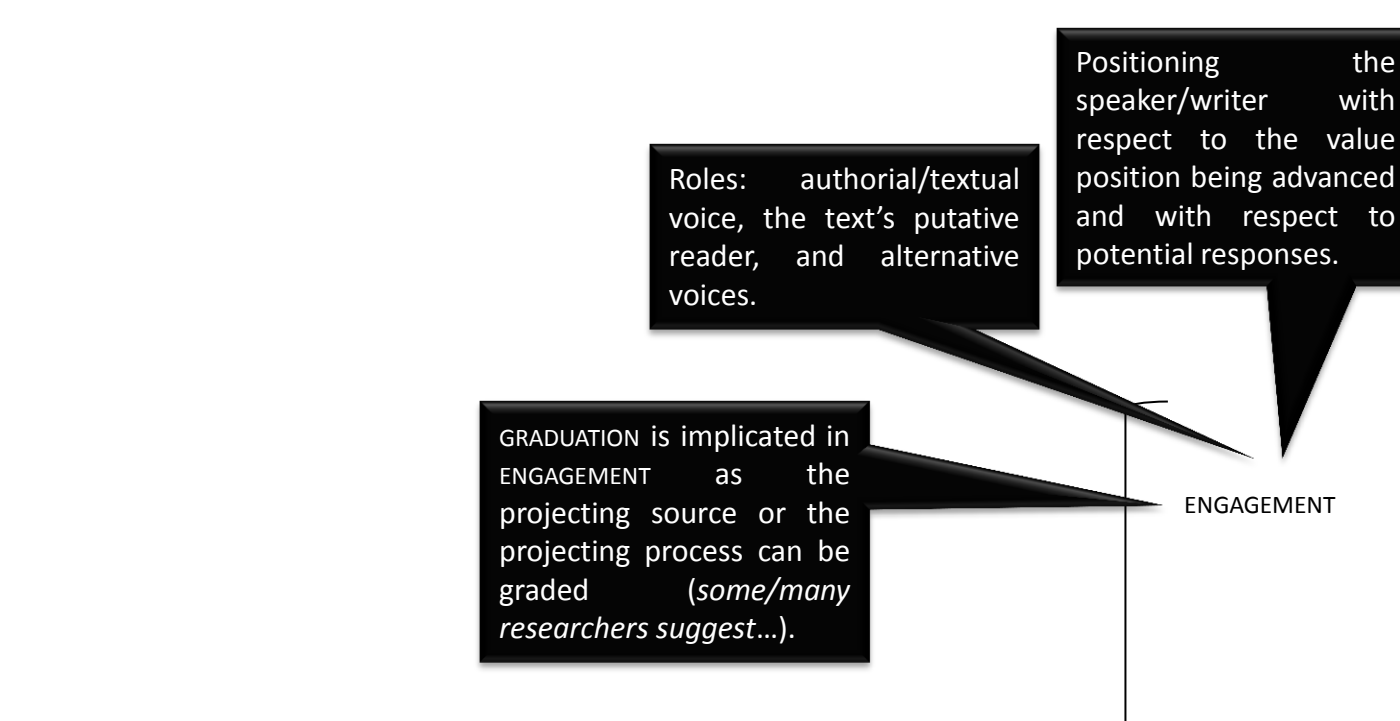
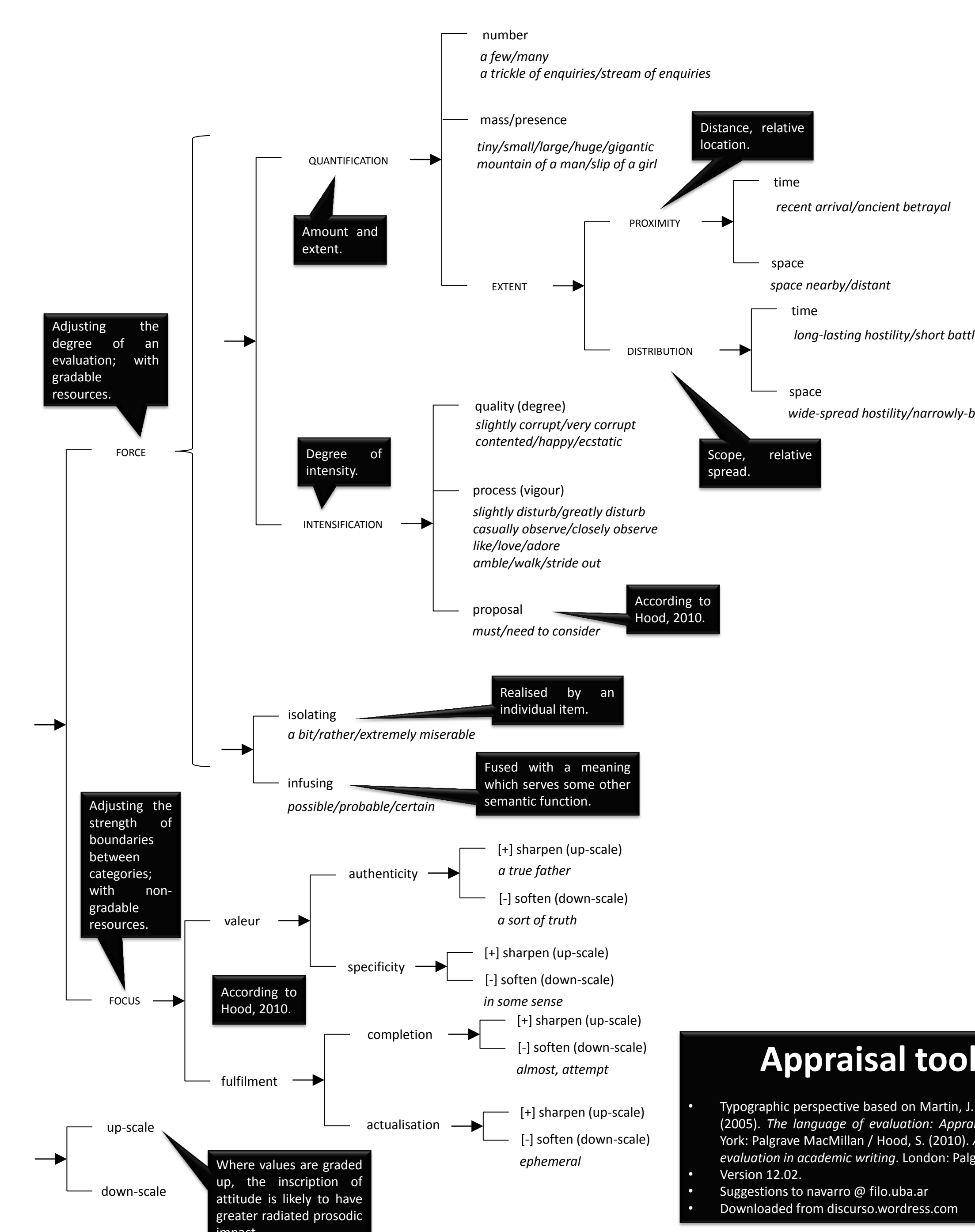
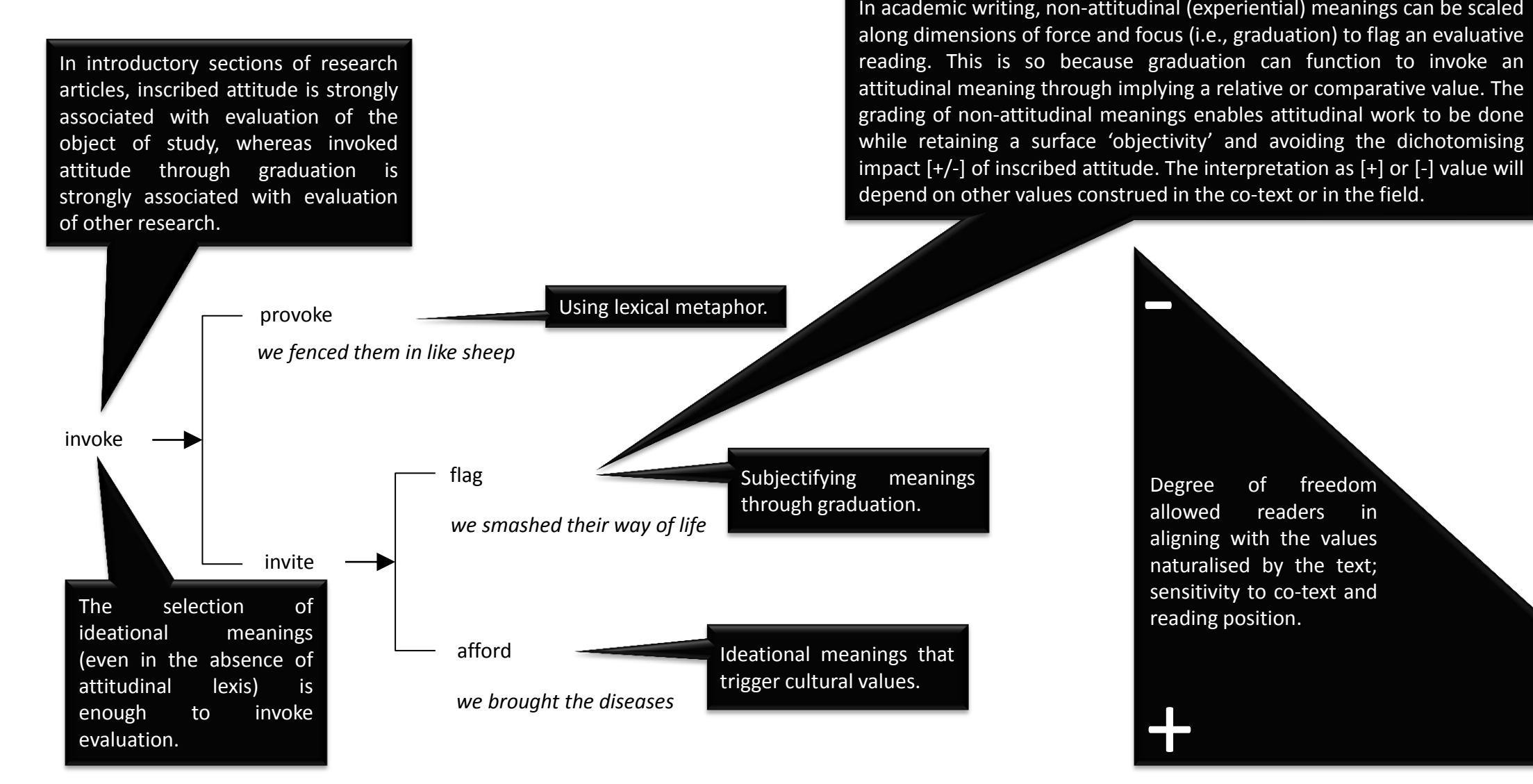
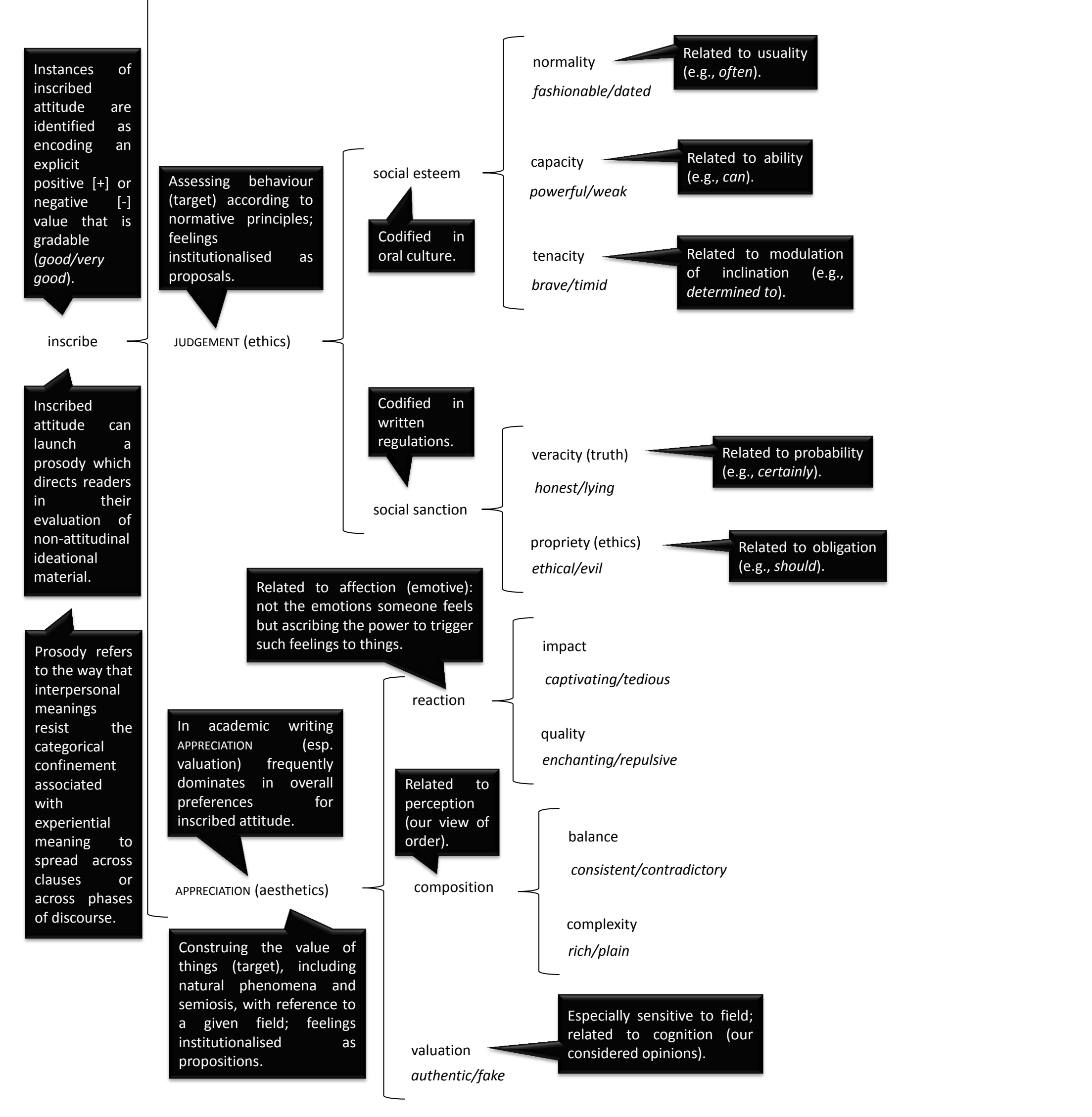
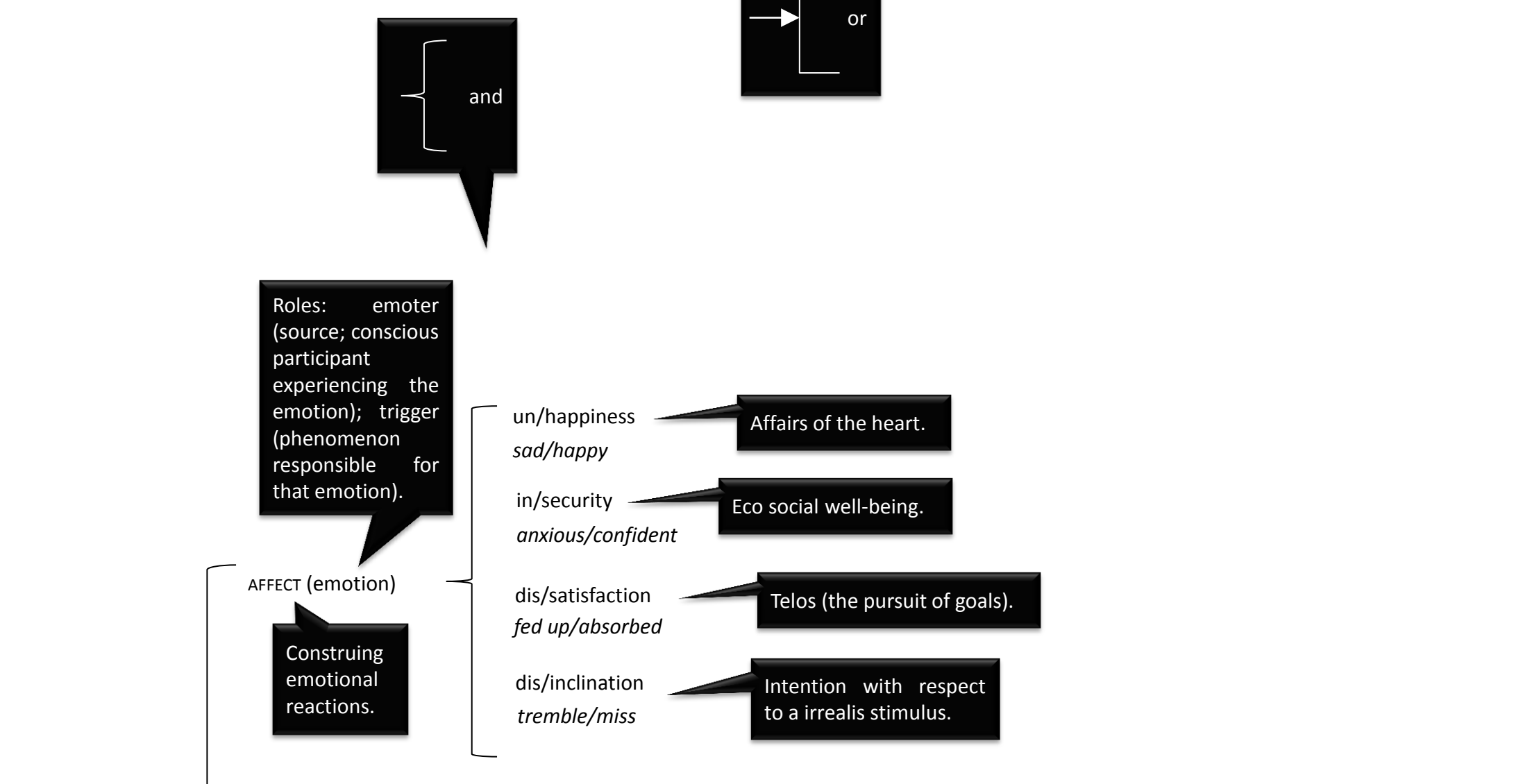
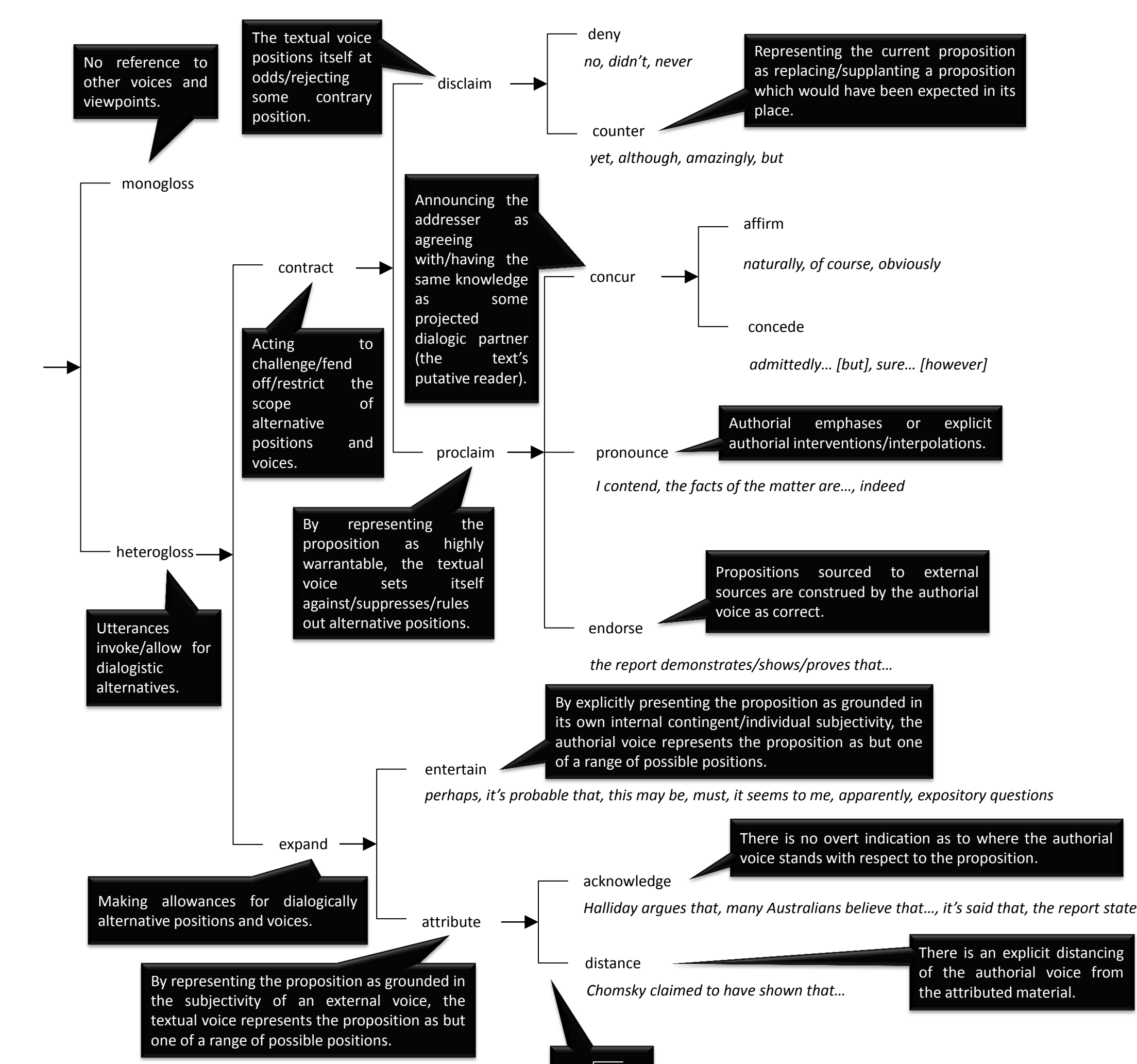
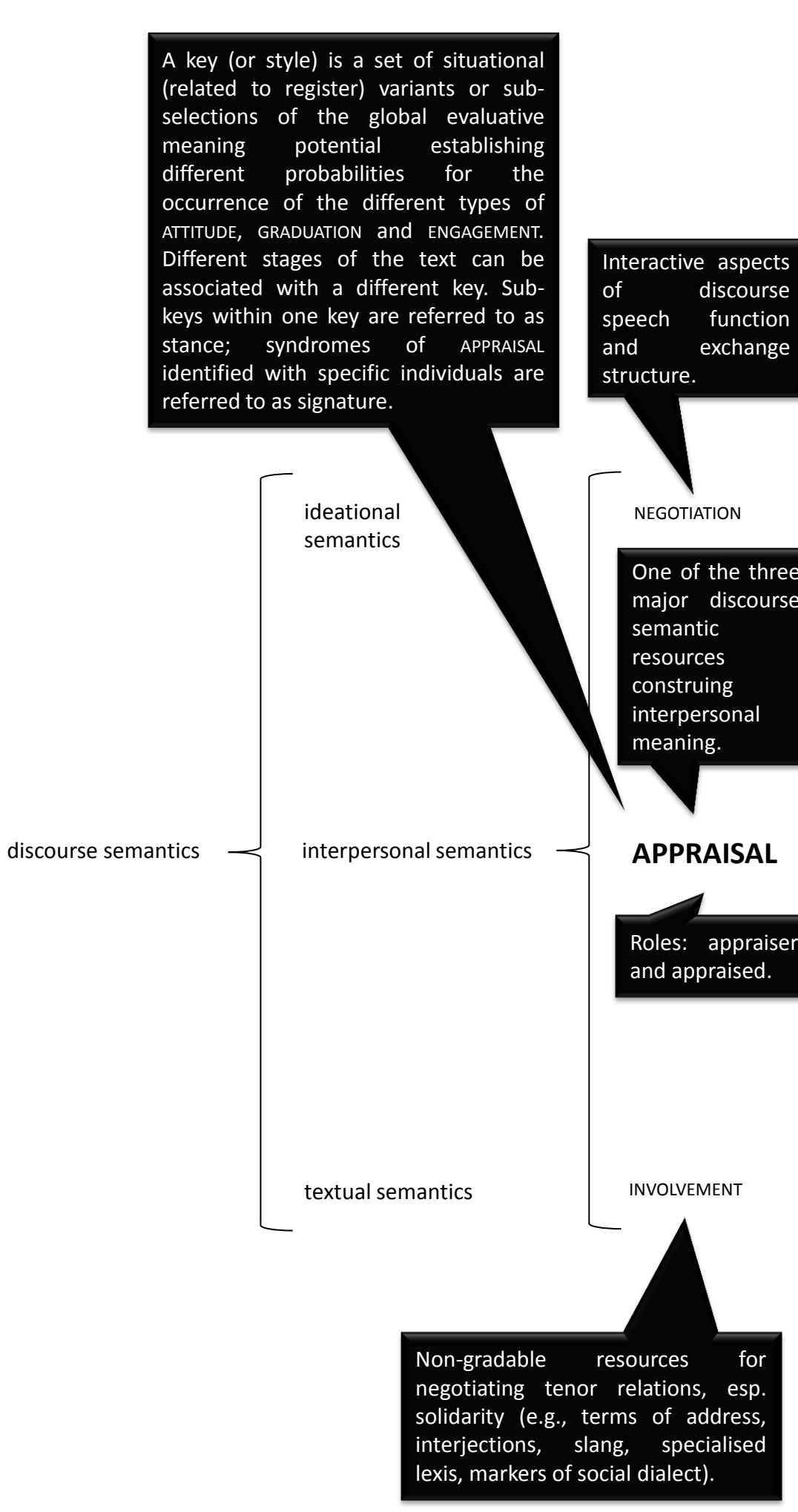
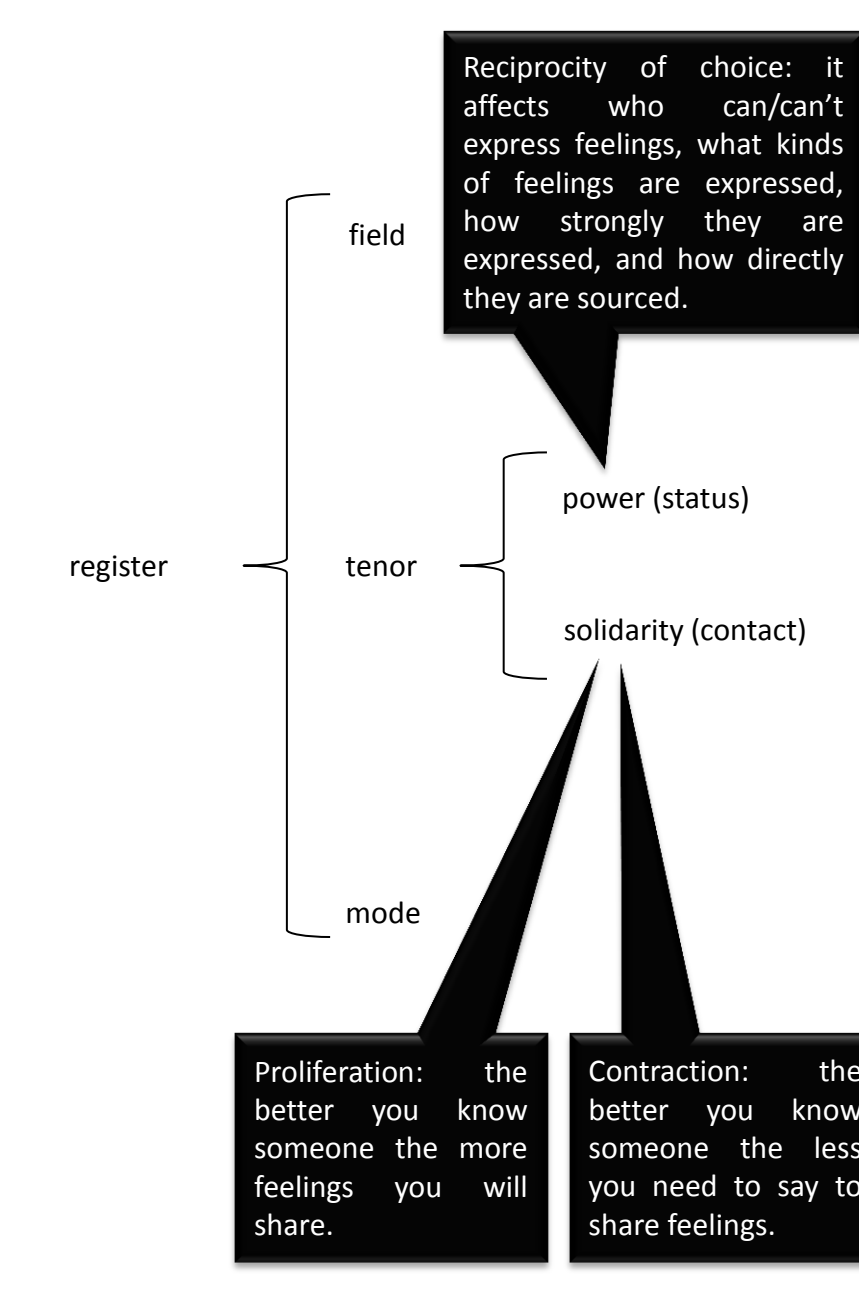


context language



Bold text, underlined text, small capitals, boxed text - links and colours (correct: red, incorrect: green, uncorrected: blue) are used to encode appraisal analysis.



Appraisal toolkit

- Typographic perspective based on Martin, J. R., & White, P. R. II. (2005). The language of evaluation: Appraisal in English. New York: Palgrave MacMillan / Hoard, S. (2010). Approaching research: evidence in academic writing. London: Palgrave MacMillan.
- Version 12.02.
- Suggestions to readers: @ Rita.du.ras
- Downloaded from discourse.warwick.ac.uk

Writers/speakers employ rhetorical strategies when making choices within discourse-semantic systems. These choices are encoded as lexical and grammatical realizations in texts.

Degree of delicacy of choice in the system networks.